



Remedial Tie

Westox Helical Anchoring System



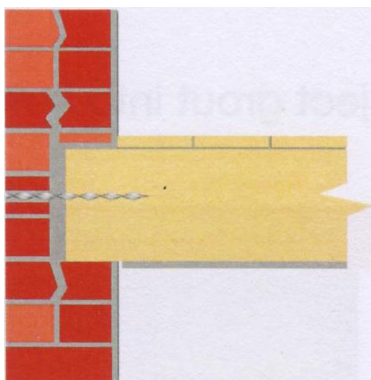
DESCRIPTION

TDS43 Rev7 17/02/20

The Westox Remedial Tie anchorage system includes ties that can be hammered or grouted into masonry walls. The Westox Remedial Ties are an austenitic stainless steel 316, reinforcing material. Being rolled from a plain round wire, the fins are work hardened to a very high level whilst the core remains relatively soft. The subsequent twisting process puts the fins into tension and the core into compression. The tensile strength of the base material is more than doubled during the manufacturing process. The pronounced fins over the core make the bonding characteristics of the Westox Remedial Tie far superior to alternative standard reinforcing materials.

The Westox Remedial Ties are available in 6mm, 8mm and 10mm diameter and 200mm, 220mm and 250mm lengths. Other lengths and profile to meet the requirements of Structural Engineers and other specifiers are available on request.

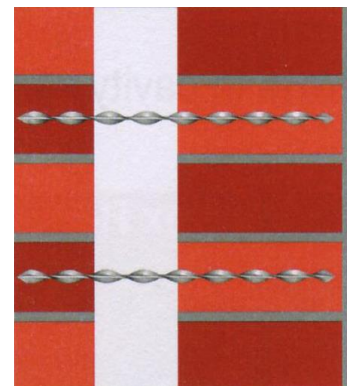
Uses – The uses of the ties are both wide and varied and they can be utilised in new buildings and for many specialised refurbishment requirements like apartment buildings, historic buildings, bridges and many more. The Westox Remedial Ties can be used for structural reinforcement and anchorage fixings.



Wall Attachment



Repair and reinforcement of
damaged wall lintels



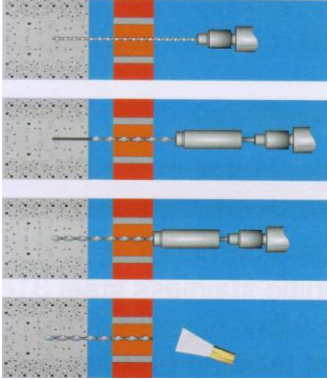
Remedial Wall Ties

WESTOX

BUILDING PRODUCTS

Remedial Tie

WESTOX REMEDIAL TIE DRY INSTALLATION

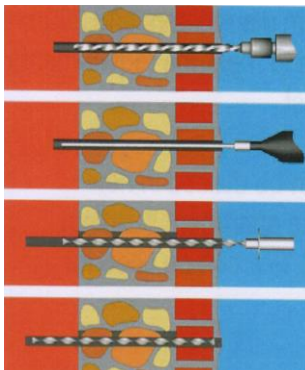


Westox Remedial Ties – Dry Fix

1. Drill pilot hole 2mm smaller than tie and approx. 70mm into the inner leaf.
2. Holes cleaning – Vacuum out the holes and flush with water.
3. Preparation of Ties – insert tie into the SDS PST3 tool.
4. Drive the tie till the tie is fully recessed into the masonry.
IMPORTANT: USE THE HAMMER ACTION, ROTATION OFF SETTING.
5. Cover hole with appropriate grout.
6. Spread the ties at one metre centres horizontally (across) and 60cm vertically (up and down) with each row staggered.

WESTOX REMEDIAL TIE – CHEMICAL INSTALLATION

Westox Remedial Tie Chemical Installation System is ideal for use in masonry walls where the quality of masonry is poor or inconsistent or where mechanical ties will not bind with the masonry. The use of Polyester Resin Grout is needed.



Westox Remedial Ties – Chemical Fix

1. Drill hole 2mm larger than tie and approx 70mm into inner leaf.
2. Holes clearance – Vacuum out the holes and flush with water.
3. Mix grout and using the appropriate nozzle inject grout into the hole.
4. Push the tie till the tie is fully recessed into the masonry.
IMPORTANT: USE THE HAMMER ACTION, ROTATION OFF SETTING.
5. Cover the hole with appropriate grout.

NOTE: In cavity walls inject grout into the inner leaf, insert tie and then inject grout into outer leaf.

WESTOX REMEDIAL TIE – DRY APPLICATION WITHOUT RESIN



Choose Position



Drill Pilot Hole



Inserting Tie into wall



Finishing